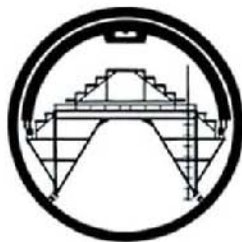




Assembly Instructions Custom Kiln Access Ramp

Legigh Cement Mason
City, #07801



SAFETY REQUIREMENTS

- **THE PEDESTAL MUST BE DRILLED AND SECURELY BOLTED TO THE BURN FLOOR.**
- **THE LEAD UP AND BRIDGE SECTIONS MUST BE SECURELY BOLTED TO THE PEDESTAL AND TO EACH OTHER.**
- **THE NOSE PIECE MUST REST UNIFORMLY ON NEW KILN REFRACTORY LINING OR SECURE BLOCKING OF THE SAME THICKNESS AS THE LINING.**
- **THE SIDE HAND RAILS MUST BE IN PLACE AND SECURE BEFORE ALLOWING PERSONNEL OR MACHINES TO CROSS THE RAMP.**
- **INSPECT THE RAMP BEFORE AND AFTER EACH USE FOR DEFORMATIONS AND DAMAGED OR CRACKED WELDS**
- **FOOT TRAFFIC AND VEHICULAR TRAFFIC SHOULD NOT USE THE RAMP AT THE SAME TIME**
- **STORE ALL COMPONENTS OF THE RAMP TOGETHER IN A PLACE THAT WILL BE PROTECTED FROM TRAFFIC COLLISIONS AND DAMAGE FROM DROPPED OBJECTS FALLING OR HEAVY OBJECTS BEING PLACED ON TOP.**
- **DO NOT USE ANY PART OF THE RAMP FOR SUPPORT OF WORKING MACHINERY LIKE DEMOLITION EQUIPMENT.**

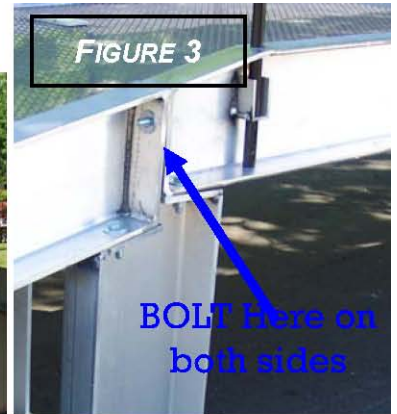
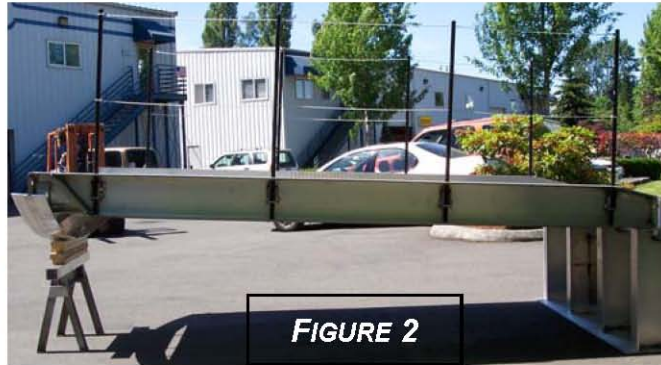
SETTING UP THE RAMP

STEP 1: Set the PEDISTAL(s) in place and bolt it to the burn floor. (Figure 1)

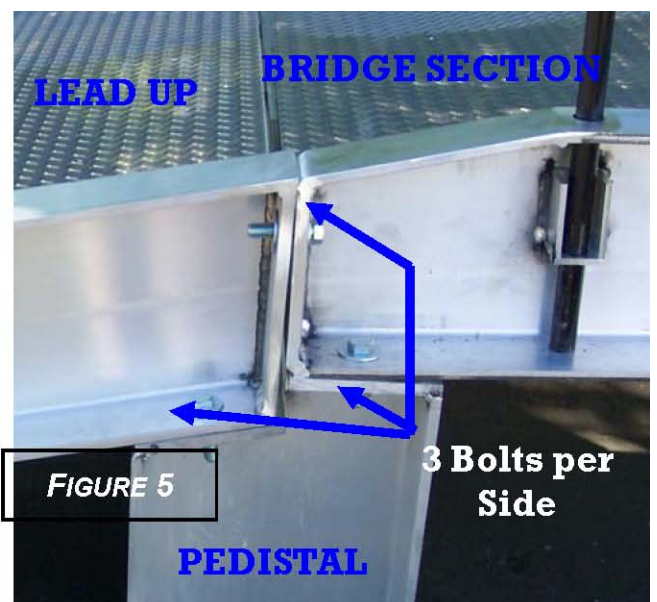
STEP 2: Use the Fork Truck holders to carry and set the BRIDGE SECTION across the cooler span, resting on the PEDISTAL and just inside the Kiln lip (Figure 2) HAND RAILS need not be pre-installed for this step (See step 5)

STEP 3: **LOOSELY** bolt the BRIDGE SECTION to the PEDISTAL using two 5/8 x 2" GRADE 5 bolts (included) (Figure 3) NOTE: Use of a tapered pin will assist in aligning the holes

STEP 4: Set the LEAD UP on the PEDISTAL and against the BRIDGE SECTION and bolt all three pieces together using four more 5/8 x 2" GRADE 5 bolts (included) (Figure 4 & 5)



ONCE ALL SIX BOLTS ARE IN PLACE. BE SURE TO TIGHTEN ALL BOLTS USED SECURE THE PEDISTAL TO THE BURN FLOOR AND THE LEAD UP AND BRIDGE SECTIONS TO THE PEDISTAL



STEP 5: If the HAND-RAILS were not installed prior to setting BRIDGE SECTION 'A' across the cooler span, install them now (Figure 6) Use the fork truck to place BRIDGE SECTION 'B' into the kiln and securely bolt it to BRIDGE SECTION 'A' on both sides

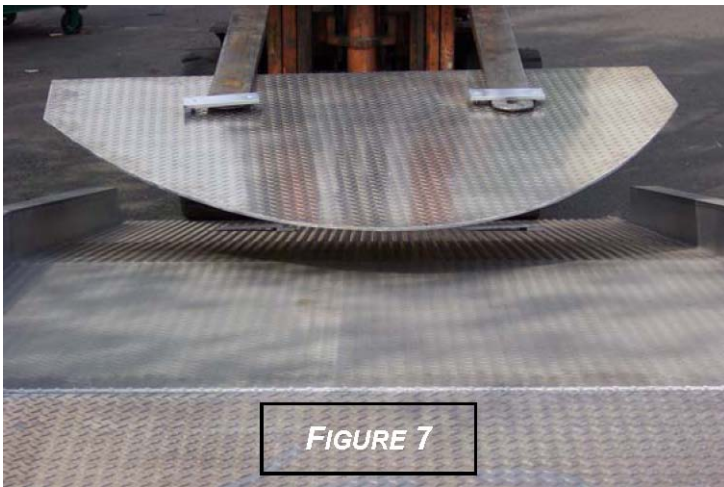


Safety Hand-Rails install into holder slots located along the outside of Bridge Section

DO NOT ALLOW PERSONELL OR MACHINES TO CROSS THE BRIDGE DECK BEFORE THE SAFETY HAND RAILS ARE SECURELY IN PLACE

FIGURE 6

STEP 6: The NOSE PIECE can now be carried across the BRIDGE SECTIONS using a fork lift and set in place (Figure 7 & 8)



BE SURE THE NOSE PIECE IS RESTING UNIFORMLY ON NEW REFRACTORY LINING OR IS UNIFORMLY BLOCKED WITH WOOD AND INTERLOCKING 2 INCH CHANNELS ARE FULLY ENGAGED BEFORE DRIVING OR WALKING ON THE NOSE PIECE

FIGURE 7



FIGURE 8

